

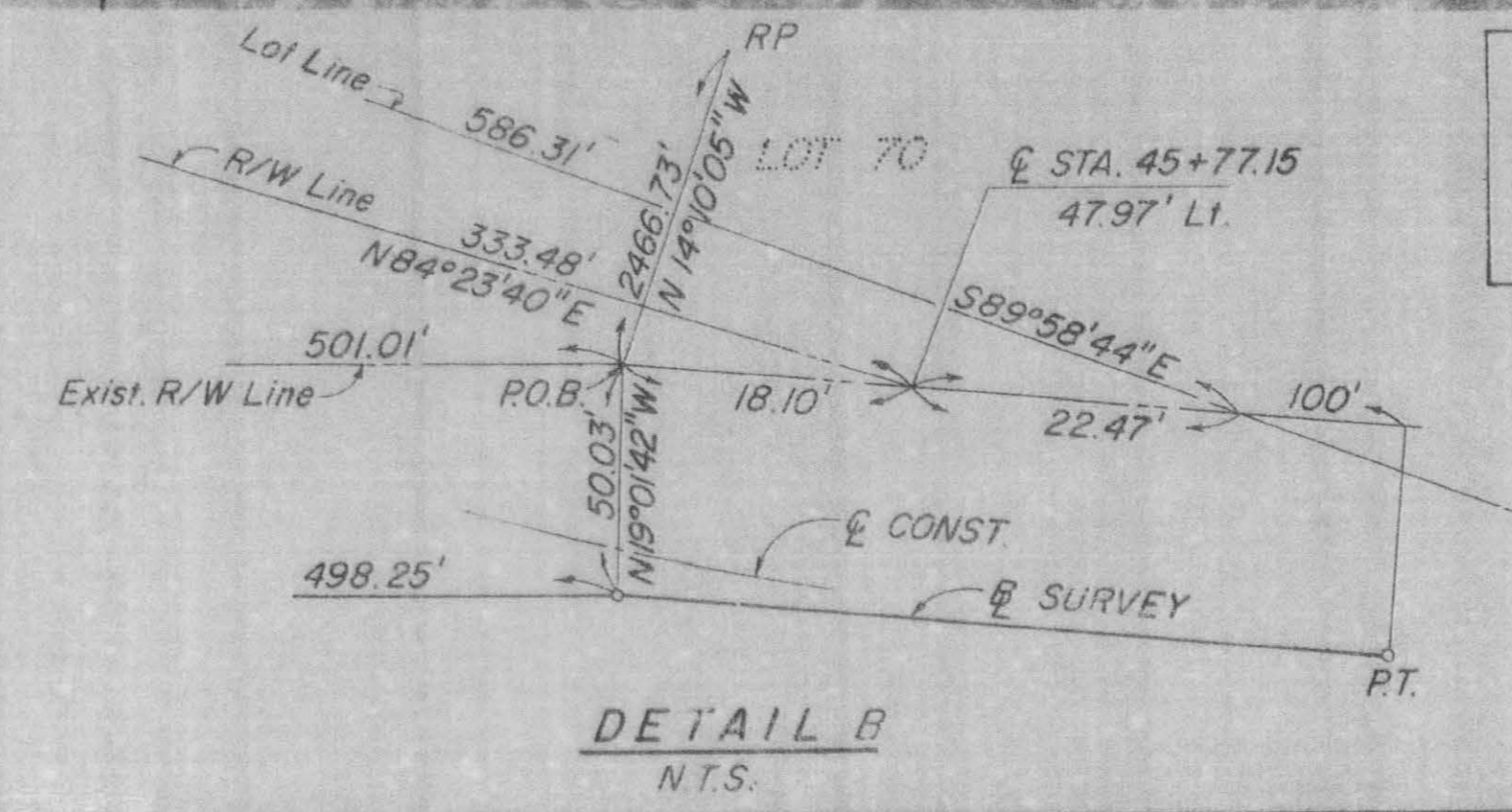
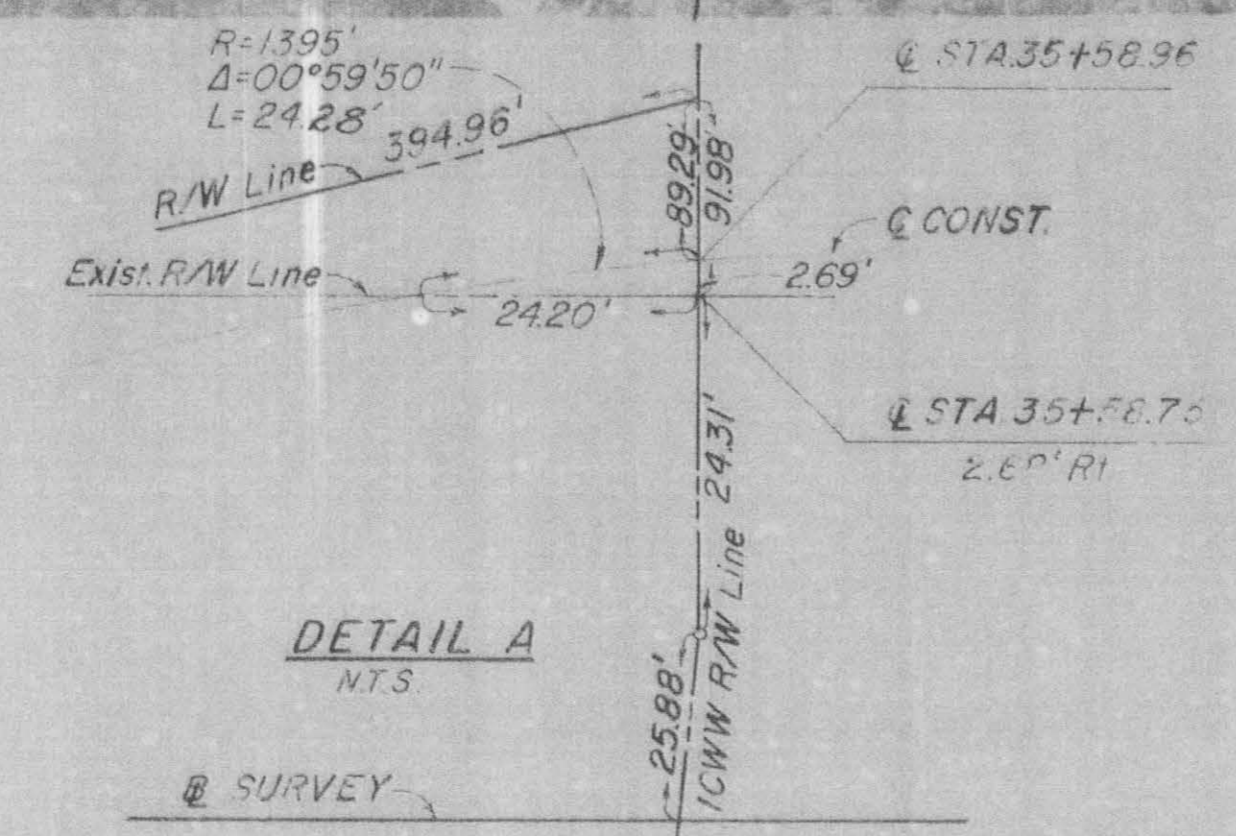
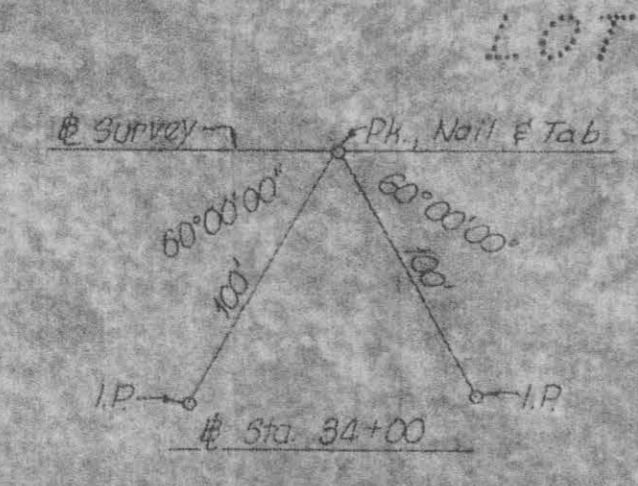
FED. HIGHWAY DIST. NO.	STATE	F.A. PROJECT NO.	SCALE	SHEET NO.
3	FLA.			

(BRS-4939-(4))

CONST. CURVE DATA

CURVE No. 1	CURVE No. 2	CURVE No. 3	CURVE No. 4
P.I. Sta. 32+24.14 = @ Survey Sta. 32+24.14 (0' Lt.) $\Delta = 9^{\circ}31'38''$ Lt. $D = 4^{\circ}06'26''$ $T = 116.25'$ $L = 231.96'$ $R = 1395.00'$ $e = .033$ Ft./Ft. P.C. Sta. 31+07.89 = @ Survey Sta. 31+07.89 (0' Lt.) P.T. Sta. 33+39.85 = @ Survey Sta. 33+38.79 (19.24' Lt.)	P.I. Sta. 35+86.10 = @ Survey Sta. 35+81.64 (60' Lt.) $\Delta = 9^{\circ}31'38''$ Rt. $D = 4^{\circ}06'26''$ $T = 116.25'$ $L = 231.96'$ $R = 1395.00'$ $e = .033$ Ft./Ft. P.C. Sta. 34+69.85 = @ Survey Sta. 34+66.99 (40.76' Lt.) P.T. Sta. 37+01.81 = @ Survey Sta. 36+97.89 (60' Lt.)	P.I. Sta. 42+01.09 = @ Survey Sta. 41+97.16 (60' Lt.) $\Delta = 9^{\circ}31'38''$ Rt. $D = 4^{\circ}06'26''$ $T = 116.25'$ $L = 231.96'$ $R = 1395.00'$ $e = .033$ Ft./Ft. P.C. Sta. 40+84.84 = @ Survey Sta. 40+80.91 (60' Lt.) P.T. Sta. 43+16.80 = @ Survey Sta. 43+11.80 (40.76' Lt.)	P.I. Sta. 45+63.05 = @ Survey Sta. 45+54.66 (0' Lt.) $\Delta = 5^{\circ}17'43''$ Lt. $D = 2^{\circ}16'45''$ $T = 116.25'$ $L = 232.34'$ $R = 2513.90'$ No Super P.C. Sta. 44+46.80 = @ Survey Sta. 44+40.01 (19.24' Lt.) P.T. Sta. 46+79.14 Bk. = @ Survey Sta. 46+70.91 Ahd.

SCALE: 1" = 50'



This right of way map when recorded is an instrument of conveyance, transferring in accordance with the Florida Statutes 337.29 all right, title, and interest of the Florida Department of Transportation in the road, street, highway, set forth on this map to Martin County.

Recorded in Public Records of Martin County, Florida, this day of \_\_\_\_\_, A.D. 2012, in Road Plat Book \_\_\_\_\_, Page \_\_\_\_\_.

Clerk of the Circuit Court  
Martin County, Florida

The limits of this roadway transfer for Section 89030-3511 BRIDGE ROAD is from US1 (S.R. 5) to SR 707 (ROYAL PALM BLVD) the length being approximately 1.3 miles.

PREPARED BY  
MID SOUTH ENGINEERING CO.  
CONSULTING ENGINEERS  
LAUDERDALE-BY-THE-SEA, FLORIDA

STATE OF FLORIDA DEPARTMENT OF TRANSPORTATION	
RIGHT OF WAY MAP	
STATE ROAD No. 707	MARTIN COUNTY
BY: M. Dubowik	DATE: 8/1/80
APPROVED BY: D.R. Fidler	DATE: 8-1-80
CHECKED BY: B. Flaherty	DATE: 8/1/80
COMPARED BY: W.A. Saper	DATE: 7-30-81
SECTION: 89C 0-2511	SHEET 4 OF 4

REMOVE CROSSHATCH	STOUT	2-19-82
ADD P.A.S. 104	STOUT	12-22-81
REVISION	BY	DATE

B.I.N.O. 416116